



WOODLAND LIFESTYLE

Bamboo Installation Guide

Installation Instructions

PREPARATION

INSTALLATION

E3 /AS1 COMPLIANCE

MAINTENANCE

Acclimatize bamboo outside of packets for 48-72 hours prior to installation. [1]. Colour variations are a feature of this natural flooring, check they can be subtly incorporated into the overall flooring job by laying trial planks and mixing the packets up.

You will need:

- Rubber Mallet
- Tapping Block
- 40-tooth or greater CARBIDE saw blade
- Spacers (wood or plastic)
- Chalk Line
- Tape Measure
- Carpenters' Square
- Felt or Resin Paper

- 1 Woodland Lifestyle Bamboo flooring can be installed directly over most existing floor coverings including wooden and concrete subfloors. (not over carpet or any soft lining).
- 2 The sub surface must be absolutely level, dry, clean and stable. Smooth over raised or hollow areas with a levelling compound. In the case of a wooden subfloor you may need to consider fitting plywood at 150mm centres if the area is particularly uneven.
- 3 Fill any low spots in the subfloor greater than 3mm in 2m with a cement levelling compound. Check this by using a straight edge. Remove any high spots by sanding or grinding.
- 4 An acoustic sound-deadening underlay with an incorporated moisture barrier must be installed under your Bamboo Floor. In the case of a wooden sub-surface such as installed sheets or floorboards, install these sheets together but do not tape joins.
- 5 If installing your Bamboo flooring on a mineral-based sub-surface, concrete, screed, etc.) it is crucial that a polythene sheet (min. thickness 200 micron) is put down first as a protection against moisture. Strips of the polythene should be overlapped by 20cm & taped with wide adhesive tape & should run up the wall approximately 5-7mm (Any showing after installation can be cut off before the skirting is fitted.) Install underlay perpendicular to the way you would like to lay your Woodland Bamboo Floor. [2]
- 6 Undercut doorframes. Lay a loose plank upside down on the top of the underlayment against the frame. This will be your guide for proper height to allow installed planks to float under it. Saw the bottom of the doorjamb case moulding back to the wall studs, so that the 6-7mm expansion gap is maintained while bamboo is fitted under doorjamb case moulding. [3]
- 7 Skirting boards can be removed and refitted over the top of Woodland Bamboo, or Woodland Bamboo Flooring can be installed without sliding under the existing skirting & using a skirting board, fitted after the floor is installed to cover the expansion gap.
- 8 Woodland Bamboo Flooring is installed under "floating" conditions and may not be glued, screwed, nailed, or in any other fashion fixed (e.g. by using a doorstopper) to the floor.

*numbers in [] refer to illustrations on page 3

Installation Instructions

PREPARATION

INSTALLATION

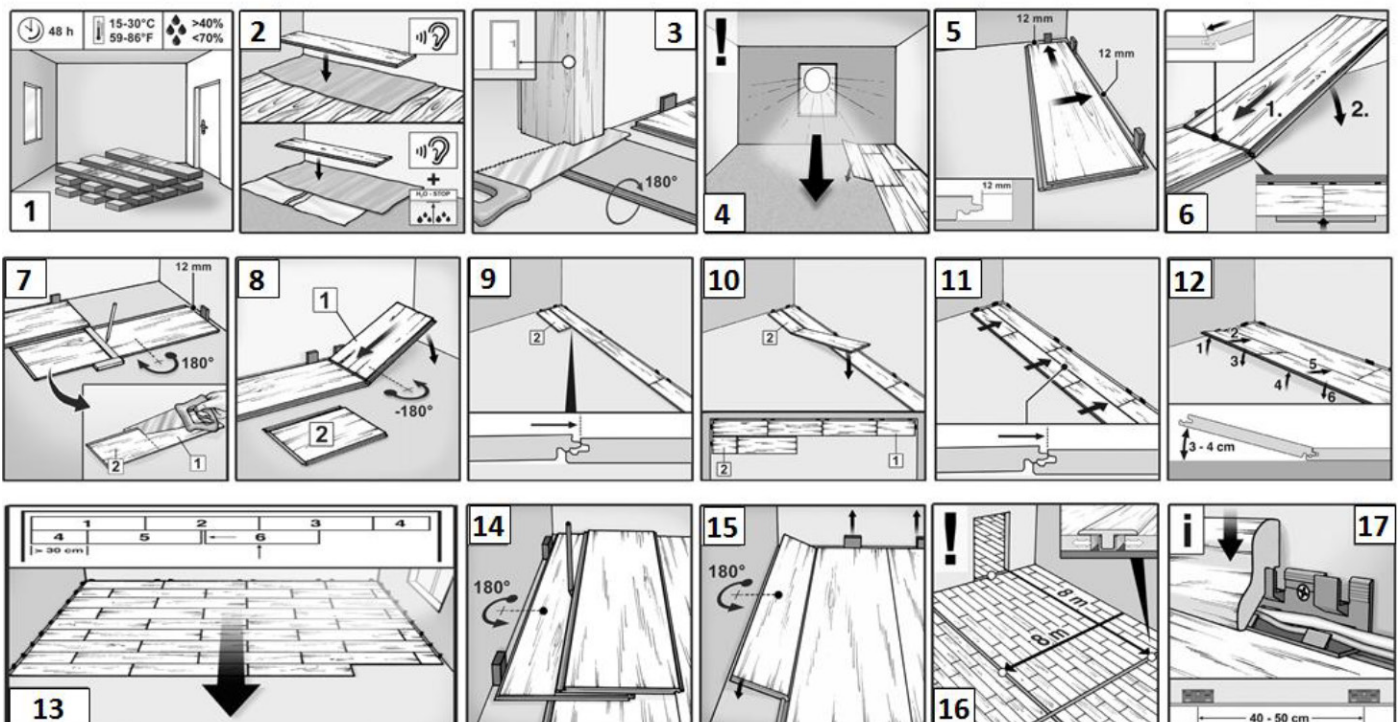
FINISHING

MAINTENANCE

Please note that Woodland Lifestyle Bamboo flooring is consented for installation in kitchens under the E3 building code (see page 3&4) but is not suitable for other wet areas (e.g. bath, toilet or sauna or any other room subject to moisture regularly). It also must not be installed over under-floor heating.

INSTALLATION STEPS

- 1 It is recommended to install the planks parallel to the longest wall and if possible along an outside wall as this will most likely be the straightest.
- 2 Using spacers to maintain the expansion space, begin by laying the first plank in a corner with the long grooved side toward the long wall. It is important to retain a 8-12 mm edge distance (expansion gap) from the wall, heating pipes, posts, doorstep, etc.
- 3 Connect the short side of the second plank together with the mating side of the first plank.
- 4 Cut the last plank and complete the row. Use the remaining plank to start the second row.
- 5 Make sure to offset the end joints of consecutive rows by a minimum of 300mm for best appearance.
- 6 Continue the second row by connecting the short edges of the planks first with the long edges.
- 7 The last row may require rip cutting the planks to size, when cutting the last plank to make it fit you will have to keep the finished face up to avoid leaving a furry edge on the seen face, be sure to maintain proper expansion space.
- 8 As with the other rows, complete the last row by connecting the short edges first and using a pull bar (Available instore) to tap the long edges together. It is recommended that any stairs be installed by a professional installer.
- 9 Cut off any excess moisture barrier (Polythene) showing and install skirting around the perimeter of your floor.



Installation Instructions

PREPARATION

INSTALLATION

E3 /AS1 COMPLIANCE

MAINTENANCE

At Woodland Lifestyle, we ensure our products are compliant with the New Zealand building requirements and our Bamboo flooring has passed the Moisture penetration test ISO4760:2022 to ensure it is a viable alternative solution.

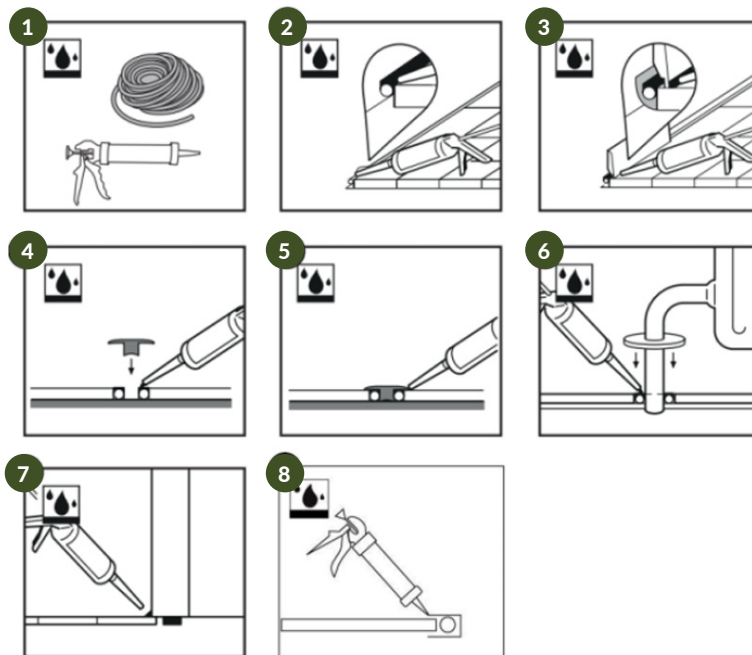
Our Bamboo flooring can be installed as an alternative solution to comply with NZ building code E3/AS1 when installed in kitchens only. (Bathrooms, laundries and other wet areas are not included)

Perimeter Splash Protection

To provide the required impervious surface Bamboo Flooring must be installed with Unika Clicseal in areas subject to water splash. Unika Clicseal is applied into the joints of the flooring during installation, refer to our installation guide for further information.

Unika Clicseal is a specially formulated sealer that creates a waterproof barrier and produces an impermeable seal, preventing water from seeping through the joints and causing water damage to your flooring.

As per NZBC E3/AS1, the below perimeter finishing installation method must extend at least 1.5m from any sanitary fixture or sanitary appliances, including items such as dishwashers. Follow Clicseal instructions on how to seal around these appliances. <https://goldtech.nz/service/clic-seal>



- 1 To protect the perimeters of your floor from water ingress in wet areas a Silicon + Foam rod installation is required, this includes flexible transparent silicon and a PE foam rod.
- 2 Push the PE foam into 8 - 10mm perimeter expansion gaps, then apply the silicon on a slight angle to the top of the PE foam rod.
- 3 Install skirting boards and seal the flooring edge of the skirting board with silicone to prevent water ingress.
- 4 When transition profiles are required install the PE foam rod and silicon in the expansion gap ensuring room is left for the base of the transition profile.
- 5 Install the expansion profile covering the expansion gap and PE foam rods. Silicon the edges of the profile to prevent water ingress

Installation Instructions

PREPARATION

INSTALLATION

E3 /AS1 COMPLIANCE

MAINTENANCE

- 6 For a great finish around pipes, use pipe covers. Install the PE foam rod and apply silicon in the expansion space before placing the pipe cover on the floor, silicon the edges of the pipe cover to ensure no water ingress.
- 7 In areas wet areas where kickboards, wall boards, door jambs etc are present apply silicon to the floor edge of the panels to ensure no water ingress underneath.
- 8 In areas where edges of bamboo are exposed e.g., in dishwasher cavities. Prevent water ingress by covering the ends of the laminate using a C channel with a foam rod inside, silicon the edge of the profile to stop water ingress.

CARE & MAINTENANCE

Keep a few planks extra

After installation keep a few planks to use as possible replacement boards or to test with new cleaning solutions.

Avoid wet spills

Bamboo flooring has properties similar to wood flooring, so never leave any water standing on the surface. In case of a spill, prompt clean-up is required.

Protection

Use area rugs and doormats by outdoor entrances to prevent dirt, sand, grit and oils being tracked and scratching the surface. Use felt floor protectors on heavy objects of furniture such as tables, chairs and couches and pvc matting for chairs with castors. Avoid stiletto style heels, spiked golf shoes or cleats and keep pet's claws trimmed. When moving heavy furniture, put down a sheet of Masonite or plywood for protection and use a dolly when moving heavy furniture or appliances. UV light will soften or darken the various bamboo colours. This is a gradual and natural occurrence with natural products.

Regular Cleaning

Use a vacuum cleaner with a soft-brush to remove excess dirt and debris from your floor. Then, simply spray a standard Wood Floor Cleaner and remove with a micro-fibre mop or double squeeze a standard mop. **DO NOT USE A STEAM CLEANER, POLISH, ABRASIVE CLEANERS OR EXCESS WATER.**

Further information regarding repairs can be found on our website.



WOODLAND LIFESTYLE

hello@woodlandlifestyle.co.nz
www.woodlandlifestyle.co.nz
(09) 308 7948