



Woodland
Lifestyle

UPDATED APRIL 2025

Laminate Installation Guide

Laminate Installation Guide

THIS LAMINATE INSTALLATION GUIDE IS FOR WOODLAND LIFESTYLE LAMINATE RANGES INCLUDING:

- Oasis / Oasis Wide
- Zenku Creation
- Zenku Artec
- Zenku Masterpieces
- Zenku Tile
- Euro Deluxe
- Active

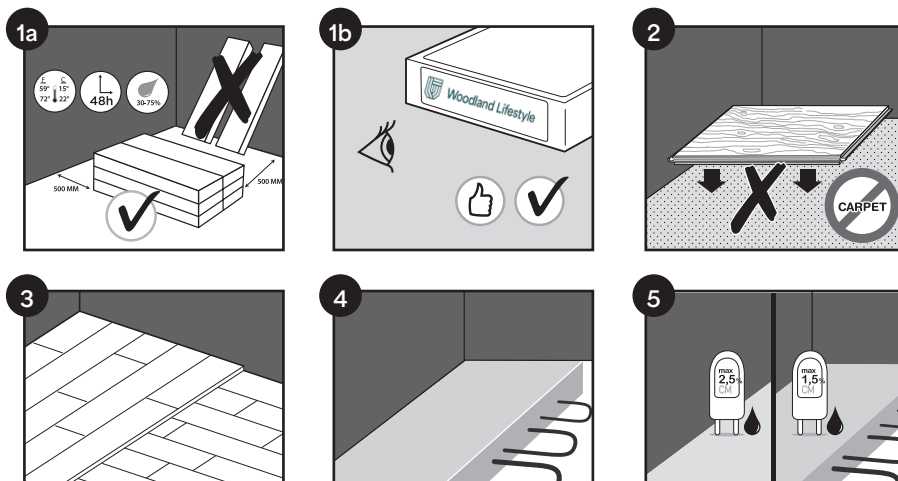
Laminate flooring should be installed in a stable indoor environment, as it is not designed to withstand extreme humidity or temperature fluctuations. Exposure to such conditions can lead to flooring issues over time.

To protect the flooring, especially in unoccupied homes, steps should be taken to regulate indoor conditions. This may include using curtains, blinds, awnings, window tinting, or air conditioning and humidity control devices. Additionally, laminate flooring should be shielded from direct radiant heat sources, such as combustion heaters, which can create excessively dry conditions.

Installation should only occur once these protective measures are in place and ideally no more than two weeks before the home is occupied. Failure to maintain proper environmental conditions may impact any applicable warranty..

Laminate Installation Guide

PREPARATION



1a. Let the planks acclimatize for 48 hours in the unopened packaging at the normal room temperature, in the middle of the room where the floor is to be installed. The ideal conditions are 15-22°C at a relative humidity of 30-75%. If climate conditions are outside this 30-75% range, we strongly advise to acclimatize for 1 week with opened packages.

1b. Woodland Lifestyle laminate floors can be bought in different formats, decors and qualities. **Make sure you have received the correct flooring** that you ordered before starting the installation. It is always a good idea to store the end labels together with your purchasing receipt.

2. Remove any damp-porous floor covering (carpet, needle felt, etc.) first. Damp-sealed floor covering (PVC, linoleum, VCT, etc.) does not have to be removed. Always use a dampproof underlay. We advise to use a Woodland Lifestyle supplied underlay. On a damp-sealed floor covering (PVC, linoleum, VCT, etc.) an underlay with a dampproof membrane (or a separated PE-foil) need to be installed to avoid migration.

Active laminate comes with a pre-attached underlay. 200 micron or greater polythene sheet must be installed when installing over a concrete or moisture prone subfloor. An extra layer of foam underlay must not be installed beneath Active laminate.

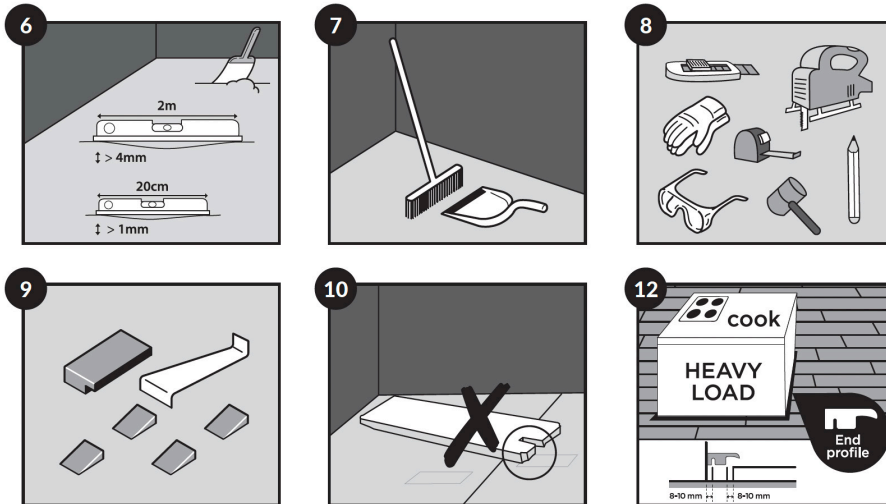
3. For wooden subfloors: Remove any existing floor covering first. No signs of mould and/or insect infestations should be present. Make sure the subfloor is level. Nail or screw down any loose parts. If the wooden subfloor is flat (no unevenness greater than 2mm over the length of 1 meter): you can install any Woodland Lifestyle underlay. If the wooden subfloor is not flat and has unevenness > 2mm and < 4mm over a length of 2m, you have to install a fibered levelling compound or underlay + plywood / OSB levelling floor. Install the new floor at ninety degrees to the existing subfloor. The crawl space under the plank floor must be sufficiently ventilated. Remove any obstacles and make sure there is sufficient ventilation (minimum 4 cm² (1/2") total ventilation openings per m² (40") of floor). The moisture content of the wood must not exceed 10%. We advise to use a Woodland Lifestyle supplied underlay. On a damp-sealed floor covering (PVC, linoleum, VCT, etc.) an underlay with a dampproof membrane (or a separated PE-foil) need to be installed to avoid migration.

4. Additional instructions apply if there is underfloor heating or cooling. For health and safety reasons and to avoid problems with laminate flooring, a floor surface temperature of maximum 27°C (80°F) is allowed. Visit www.woodlandlifestyle.co.nz for more information.

5. The moisture content of the subfloor must be less than 2,5%CM / 75%RH (cement screed) or less than 0,5%CM / 50%RH (anhydrite screed - subfloor). In the case of floor heating, results must be respectively 1,5%CM / 60%RH and 0,3%CM / 40%RH. Always measure, record and keep your moisture content results. A new cement screed floor must dry at least 1 week per 1cm (3/8") thickness up to 4cm (1-1/2"). Thickness over 4cm (1-1/2") require twice as much drying time. For example, a 6cm (2-1/2") concrete subfloor must dry at least 8 weeks. Moisture measurements should always be taken and a protocol must be kept for the future.

Laminate Installation Guide

PREPARATION



6. Make sure the subfloor is level. Any unevenness greater than 4 mm over the length of 2 meter must be smoothed out. The same applies to any unevenness of more than 1 mm over a length of 20 cm.

7. After checking the subfloor for unevenness, carefully vacuum the entire surface.

Make sure that the floor base is flat, clean, firm, and dry. To avoid risk of squeaking, secure any loose particleboard, OSB, fiberboard, timber planks etc. with screws.

8. To install your laminate floor you need the following standard tools: Hammer, saw (a jig-saw, hand circular saw, hand saw, or cross-cut saw), mouth mask (during sawing), pencil, tape measure, safety goggles and gloves.

9. You will also need the following accessories:

- Installation kit (a pulling iron, spacers and a suitable tapping block)
- An underlay or polythene (use an underlay that provides a stable foundation for the floor) and suitable maintenance products.

The use of accessories other than the Woodland Lifestyle recommended accessories might cause damage to the floor. In such case the guarantee provided by Woodland Lifestyle will be void. We therefore advise to use only Woodland Lifestyle recommended accessories as these have been especially designed and tested for the use with Woodland Lifestyle floor panels.

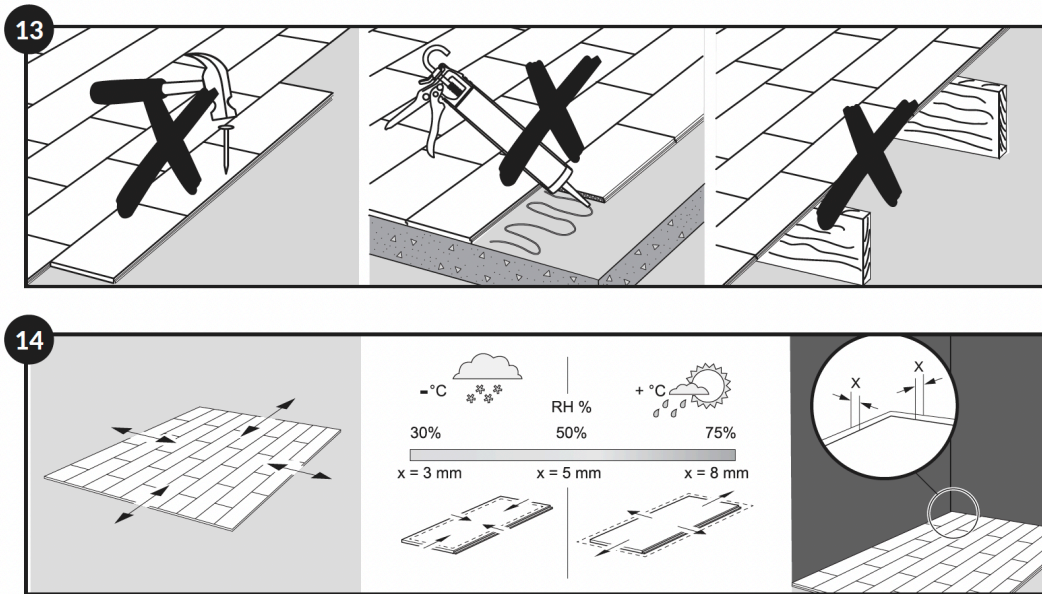
10. Check all panels before and during installation. Defective panels must never be used. An installed plank is considered as accepted and cannot be claimed.

11. Check that the doors can still open and close after the floor and underlay have been installed.

12. Kitchen islands and other very heavy objects should be installed first and not placed on top of the laminate. The laminate floor must be able to expand and contract underneath heavy objects to avoid open joints and separating planks.

Laminate Installation Guide

PREPARATION



- 13. Woodland Lifestyle laminate flooring is designed to be installed as a floating floor to allow natural expansion and contraction with changes in temperature and humidity.**

To achieve the benefits of a floating floor and to avoid possible gaps, squeaking etc. **Never fasten the floor with nails, screws, silicone etc.**

- 14. Our laminate flooring is mainly composed of natural wood and will naturally expand and contract upon changes in the relative humidity.**

The dimensional variation of the installed floor will almost be equal in length and width. At 20°C and a relative humidity, RH, between 40-60%, the movement is minimal.

Woodland Lifestyle laminate flooring is produced and delivered with a moisture content to cope with a RH between 30-60%. In dry climate, for example in colder climates in the lower South Island during winter time, the RH might drop below 30% and in summertime, humid areas such as Northland the humidity may rise above 70%. This will create movements in the floor surface. To secure enough clearance for the natural movements and to avoid possible open joints, squeaking etc. **always keep a dilatation joint of 5mm average to walls, thresholds, staircases, pipes etc. during installation. Use the spacers of the installation kit to keep the right clearance.**

Installing in winter time in very low RH, the clearance to the wall should be lowered to 3 mm since the floor panels will shrink, and if installing in high RH climate the clearance should be raised to 8 mm since the floor panels will expand.

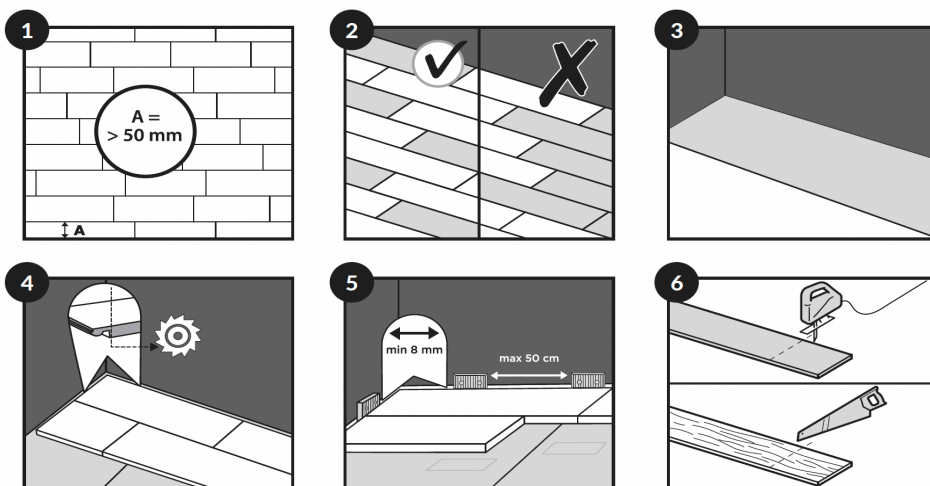
The clearance must be left open and may NOT be filled by any sealant, silicone or other adhesive. Never fasten the floor with nails, glue, screws or in any other way.

Laminate Installation Guide

INSTALLATION

Water resistant laminates are only water resistant after installation. Following these instructions carefully makes the floor fit for use in bathrooms, kitchens, laundry rooms and entrance areas. In order to obtain a good result we advise to follow all given instructions carefully.

The panels are not suitable for use in damp spaces such as pool areas, saunas and rooms with built-in drains (showers). These extra water protection instructions do not cope to national regulations of water protection in wet rooms. With Uniclic® planks you can choose where you want to begin. Think about what will be the easiest way to install the floor. We will demonstrate the installation for right-handed people, from left to right. You can work in the other direction if you want.

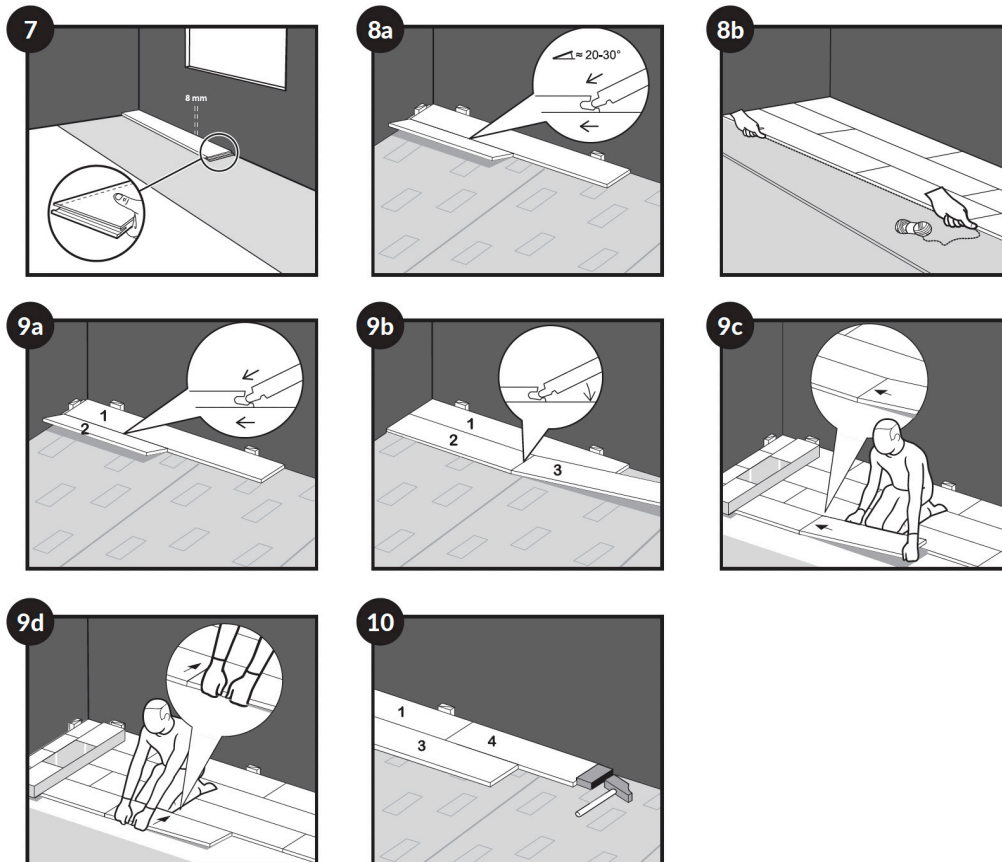


- 1. Before starting, carefully measure the length and the width of the room to plan a precise layout** to achieve a balanced appearance of the floor. This is very important when installing typical tile decors. This will ensure also you won't end up with the last row being too narrow. If the last row would be less than 50mm, the installation will be easier if you cut down the planks of the first row in the length.
- 2. Make sure the panels are mixed sufficiently** when you install them, so that you do not end up with too many identical, light or dark panels next to each other. To obtain the best visual effect, it is best to fit the floorboards in the direction of the longest wall and parallel to the incidence of light.
- 3. For laminate ranges that do not have pre-attached underlay**, begin by installing the underlay, per width and gradually as you progress. If you are installing over a concrete subfloor a 200 micron polythene must be installed beneath pad attached laminates.

It is vital that you use underlays to smooth any unevenness in the base floor. Woodland Lifestyle supplied underlay is specially designed and have a damp-proof, insulating, noise-reducing and leveling function. The smooth top surface makes installing the laminate panels easier and ensures ample expansion afterwards. You can find more information about our underlays and how to install them on the underlay packaging or at your dealer.
- 4. Begin the first row with a whole plank.** First saw off the tongue on both the long and the short sides.
- 5. Put the plank with sawn off sides against the walls. Put spaces from the installation kit between the planks and the wall.** This will ensure that your expansion joint is wide enough 8-10mm
- 6. Panels will be required to be cut down to size.** To obtain a clean cut, the pattern side should face down when you use a jigsaw, sabre saw or circular handsaw and pattern side up when you use a handsaw or a crosscut saw. Ensure that the end joints of the panels in two successive rows are never in line. Always ensure that the joints are staggered by at least 30cm / 12 inches.

Laminate Installation Guide

INSTALLATION



7. Start on the first plank that will be installed in the corner. Remove the click profile on both the long and short side of the plank by sawing. For other planks of the first row (not corner), remove the click profile on the long side that will be directly next to the wall. Any side of a plank that is directly next to a wall, must have its click profile removed, in order to ensure the required expansion gap.

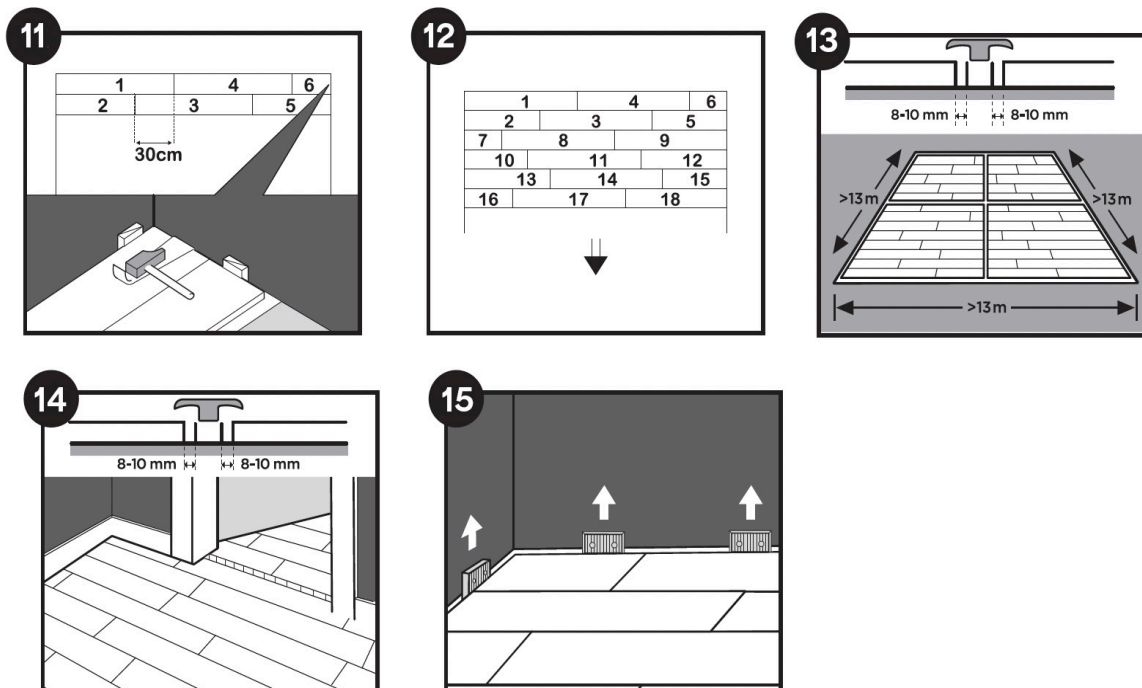
8. In order to make the start of the installation easier, assemble the first 3 rows away from the wall, so you can sit on the planks during the assembly. Then slide the first 3 rows at the wanted position close to the wall with distance spacers in place. Take a thin rope and hold it alongside the installed planks to check and adjust the straightness of your installed first 3 rows. It is recommended to make additional checks of the straightness, in order to confirm the straightness during the installation. Remember to use the distance spacers for the expansion gap of 8mm (0,315 inch) along the perimeter.

9. METHOD A (angle-angle) First, rotate the short side of the plank to be installed, into the short side of the already installed plank, by means of the angle principle. Then raise the newly installed plank to an angle of 20-30°. This will also raise the previously installed planks in the same row, because their short sides are already connected. Now place your BOTH hands close to the joint as shown in the figure and pull the long side of the plank towards you. The panels will now click together. You can either insert the tongue into the groove, or the groove on to the tongue. The tongue in groove method is the most common and easiest way. The straightness during the installation. Remember to use the distance spacers for the expansion gap of 8mm (0,315 inch) along the perimeter.

10. METHOD B (UNICLIC) With Uniclic, you can also **tap the panels into each other without lifting**. For this method you must use the special Uniclic tapping block. The planks should not be joined with a single tap. To avoid damaging the panels you must tap them together gradually. Method B is not possible with some click systems.

Laminate Installation Guide

INSTALLATION



11. In places where it is too difficult to install the planks with the tapping block (e.g. against the wall) you can tap them together using the pulling iron and a hammer. Horizontal tapping is not possible with some click systems. In this case, you should cut the bubble of the groove lip with a wood chisel or sanding machine, and add wood glue to hold panels together.

12. Continue like this to the end of the room.

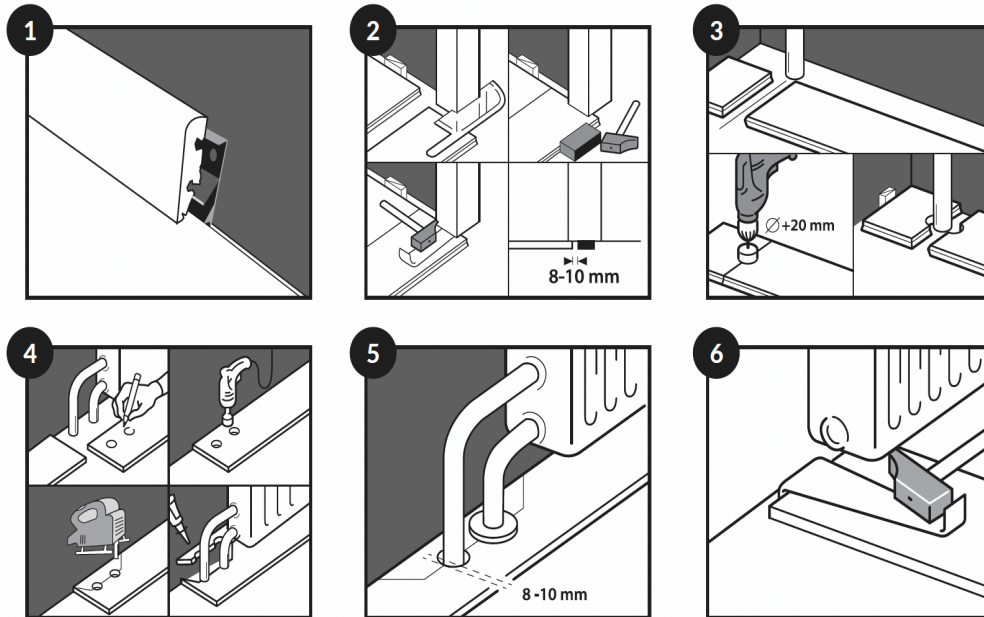
13. With the lengths of more than 13m and widths more than 13m, there should be an intermediate expansion joint. The swelling and shrinking is linear, so **the bigger the surface, the bigger the play at the edges has to be.**

14. Room humidity can vary according to the season, so it is vital that the floor is able to expand and contract. For this reason, make sure you **leave an expansion joint of minimum 8-10mm (5/16 to 3/8)** on all sides of the floor, around pipes, thresholds and under doors. Expansion joints can be **finished by a skirting** that is attached to the subfloor. It is mandatory to **provide an expansion joint between different rooms** (e.g. under the door way). In typical T, L or U shaped rooms it may also be necessary to install a dilation joint. Contact your local flooring store or technical departments in case of doubt.

15. Remove all spacers.

Laminate Installation Guide

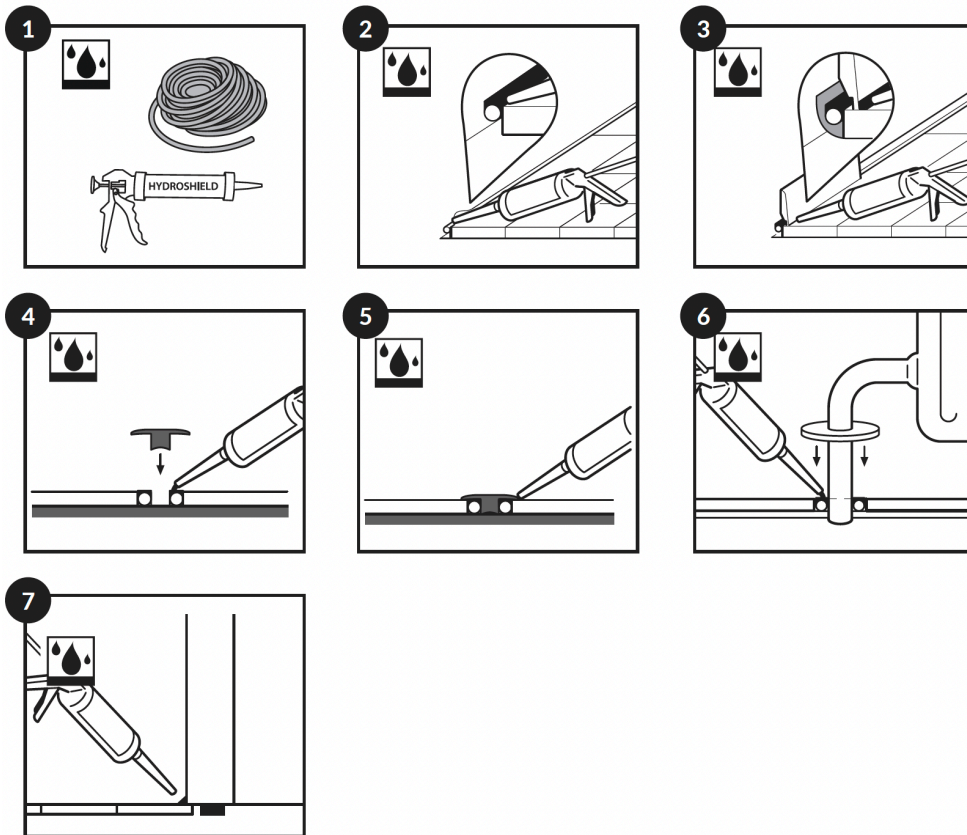
FINISHING



1. Install the skirting board against the wall. **Never attach the skirting board to the floor.** This method allows the flooring to expand and contract under the new skirting board.
2. When sawing the panels make sure that **the expansion joint under the door is at least 10mm**. If you cannot lift the panel, use a tapping block or pulling iron and hammer to tap the panels together when the planks are flat on the floor. Horizontal tapping is not possible with some click systems. In this case, you should cut the bubble of the groove lip with a wood chisel or sanding machine and add wood glue to hold the panels together.
3. **In rows where there is a pipe**, make sure the pipe falls exactly in line with the short side of the two panels.
4. **In rows where there is a double pipe**, proceed as follows:
 - Measure where the pipe will come through the plank. Don't forget to allow for the expansion joint
 - Take a drill bit measuring the diameter of the pipe plus +20 mm for the expansion. Drill through the panel where the pipe will come through
 - Extend the hole to the edge of the panel.
 - Lay the panel around the pipe
 - Take another panel and saw a piece that fits exactly in the remaining hole, and glue this piece with wood glue.
5. **For a perfect finish around pipes, use pipe covers.**
6. **In places where it is difficult to install the planks with the tapping block (e.g. underneath radiators)**, you can tap them together with the pulling iron and a hammer. Horizontal tapping is not possible with some click systems. In this case you should cut the bubble of the groove lip with a wood chisel or sanding machine and add woodglue to hold the panels together.

Laminate Installation Guide

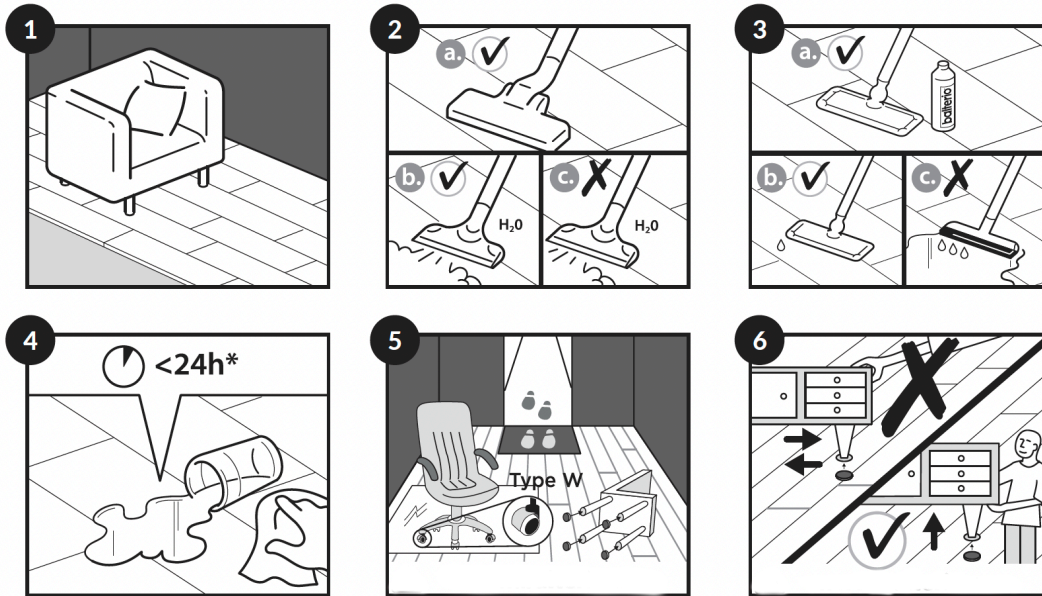
FINISHING IN MOISTURE PRONE AREAS SUCH AS BATHROOMS, KITCHENS, LAUNDRY AND ENTRANCE ROOMS: ONLY FOR WATER RESISTANT LAMINATE.



- 1. This installation instruction can prevent water infiltration around the perimeter and obstacles of your laminate flooring. Following these instruction carefully makes the floor fit for use in bathrooms, kitchens, laundry rooms and entrance areas.** The water-resistant panels are not suitable for use in damp spaces like pool areas, saunas and rooms with build-in drains like showers. For a water resistant finishing, use the elastic waterproof transparent paste (Woodland Lifestyle HydroShield) and the foamstrip (NEFOAMSTRIP).
- 2 Sealing the perimeter expansion joints** combines a compressible PE foam with diameter 8 to 10 mm and the flexible and waterproof Woodland Lifestyle HydroShield. Push the PE foam in the expansion joints and apply the flexible Woodland Lifestyle HydroShield under slight angle towards the floor.
- 3 Install the skirting-board with mounting adhesive. Apply the flexible HydroShield between skirtings and floor to avoid ingress of water.** Tip: Put a tape on the floor before applying the flexible HydroShield. This tape can be removed immediately after applying the Hydroshield. Spilled Hydroshield can be removed easily when it is dry.
- 4. Fix the base profile to the base floor with mounting adhesive and/or screws.** Apply the flexible HydroShield on the flexible PE foam that is in the expansion joint.
- 5. Push the transition profile in the base profile and the wet HydroShield.**
- 6. For a perfect finish around pipes, use pipe covers and the elastic waterproof transparant Woodland Lifestyle HydroShield on top op the PE-foam.** Then place the pipe cover and apply HydroShield around the pipe cove and around the tubes. This makes the ingress of water impossible.
- 7. To secure extra water protection** around the perimeter of the floor and avoid water to enter underneath the panels, apply the flexible Woodland Lifestyle HydroShield up to the wall base, thresholds, door frames, pipe covers etc.

Laminate Installation Guide

MAINTENANCE



1. You can walk on the floor during and immediately after installation. Ensure that humidity in the room is always at least 30%. Use a humidifier if you need to.

2a. For dry maintenance, we advise a mop or vacuum cleaner. Make sure the vacuum cleaner is equipped with soft wheels and a special parquet brush to avoid scratches on your floor.

2b. While its not recommended, you can use a steam cleaner on the Oasis collections, if there is no steam directly on the laminate. It must always be used with an appropriate cloth on the steam opening, which guarantees a homogeneous heat and steam distribution.

It is important to take care and not hold the apparatus in the same place too long. Clean the floor in the length direction of the planks. .

2c. For the other ranges never use a steam cleaner.

3a. For all maintenance, we advise the Woodland Lifestyle recommended cleaning accessories (see *instructions*). Be aware that the use of other cleaning products might damage your floor.

3b. Slightly damp maintenance is allowed on water resistant laminate ranges.

3c. Wet maintenance is absolutely forbidden on non-water resistant laminates. For further information on how to clean and maintain your floor, please visit www.woodlandlifestyle.co.nz. For specific cleaning instructions in commercial applications or projects, you can contact the Woodland Lifestyle customer service team.

3d. Remove any water within 48 hours for Oasis ranges , 24 hours for all other water resistant laminate ranges and 15 minutes for non-water resistant ranges.

5. Protect furniture and chair legs. Avoid bringing dirt, water and sand indoors by providing a suitable floor mat at the door. Use (office) chairs and seats with soft wheels that are suitable for a laminate floor and/or use a suitable desk mat.

6. Never drag items of furniture over the floor. Lift them up to move.

7. The smooth surface of your laminate floor will not retain dirt or dust. Remove stubborn stains carefully with acetone. Never use wax or varnish coating on the floor.