

E3/ AS1 Alternative Solution Guidance

Version 3 March 2025

E3/AS1 states that an impervious and easily cleaned surface must extend at least 1.5m from any sanitary item within the following listed areas Kitchen, Toilet, Laundry, and Bathroom this must also include perimeter protection from water ingress.

Independent Testing

All Woodland Lifestyle's flooring products feature an impervious and easily cleaned surface. Additionally Woodland Lifestyle engages in independent testing through NZWTA to international standard ISO 4760. These tests demonstrate there is no noticeable change to Woodland Lifestyle flooring products and there is no evidence of water penetration through to the flooring substrate during a 24hr water penetration test. This test data is available on request.

Surface Layer

The surface layer of our flooring is made impervious and easily cleaned through a number of methods including heat-cured melamine, PVC and polyurethane resins. Consult specific product technical statements for further information

Joint System

Our flooring utilises a number of locking systems including Unilin's Uniclic system and I4F's drop-lock technology. These locking systems are highly engineered to provide an extremely tight glueless joint that inhibits any ingress of moisture without the need for additional sealing.

To ensure water tightness of the joints of Woodland Lifestyle Bamboo flooring, it is required to apply Clic Seal joint sealer during installation 1.5m around sanitary items in the Kitchen, Toilet, Laundry, and Bathroom.

In-Service History

Woodland Lifestyles products have been installed in New Zealand homes around sanitary items since the products were first introduced in 2015, and have performed without issue.

Perimeter Splash Protection

To protect the perimeters from moisture ingress our floor systems use either, a flexible MS Silicone sealant or a foam rod and silicon system. These provide the necessary protection from water ingress around the perimeter of the floor.

When installed and maintained as per installation/maintenance instructions, Woodland Lifestyle is confident that our products are suitable to be used as an 'alternative solution' and meet E3/AS1 requirements.

Attached are the wet area installation instructions which form the basis of the alternative solution alongside the correct product selection.

Moses Hewetson

Moses Hewetson
General Manager

7 March 2025



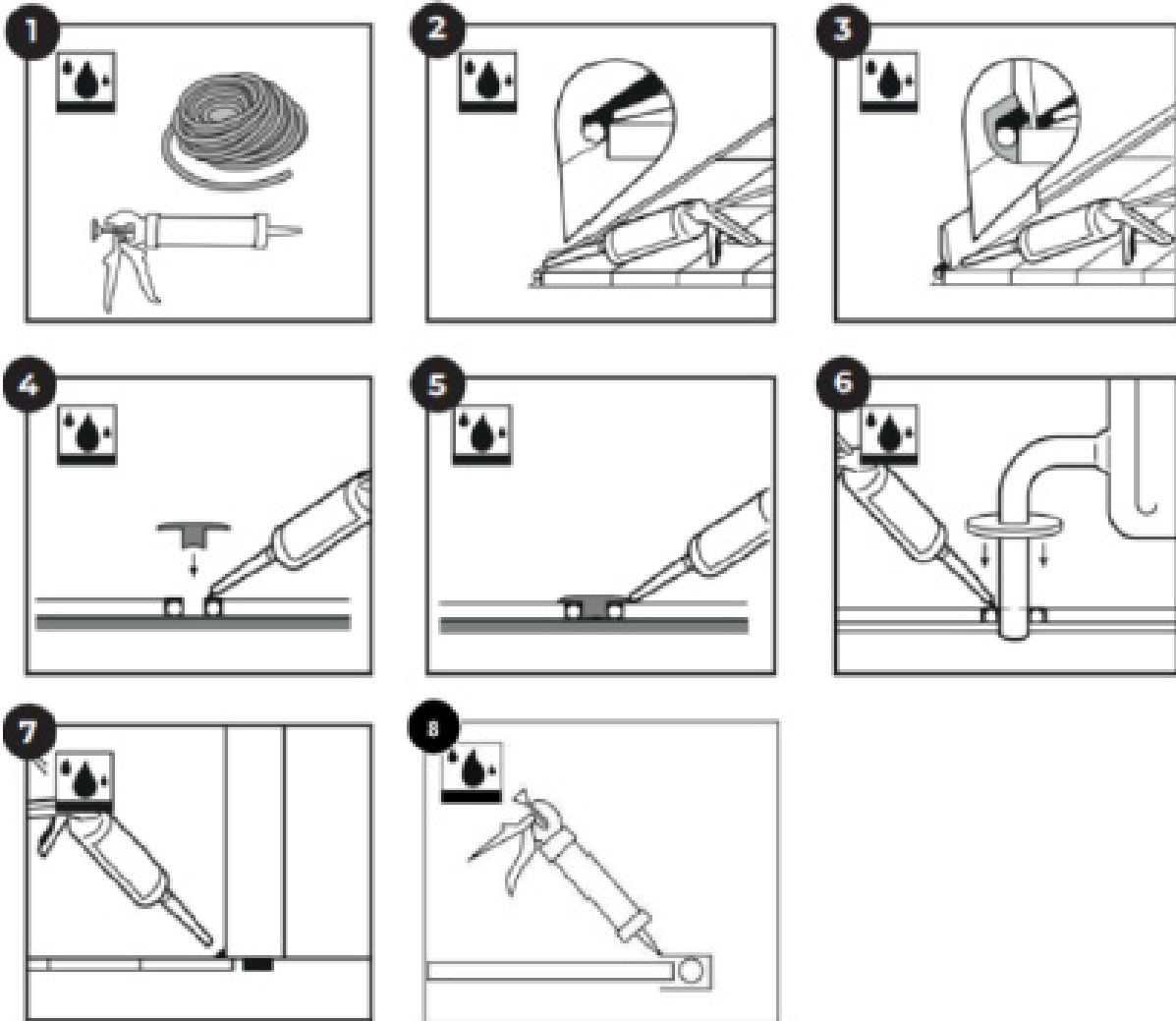
Room Suitability Guide

Product Range	Kitchen	Bathroom	Laundry	Toilet
Euro Deluxe	YES	YES	YES	YES
Vitality Style	YES	YES	YES	YES
Oasis and Oasis Wide	YES	YES	YES	YES
Zenku	YES	YES	YES	YES
Strata Herringbone	YES	YES	YES	YES
Strata Premium Hush	YES	YES	YES	YES
Strata Sentry	YES	YES	YES	YES
Revive	YES	YES	YES	YES
Native	YES	YES	YES	YES
Active	YES	YES	YES	YES
Bamboo	YES			



Wet Area Installation Document

Laminate/Hybrid/Bamboo



1. To protect the perimeters of your floor from water ingress in wet areas a Silicon + Foam rod installation is required, this includes flexible transparent silicon and a PE foam rod.
2. Push the PE foam into 8 - 10mm perimeter expansion gaps, then apply the silicon on a slight angle to the top of the PE foam rod.
3. Install skirting boards and seal the flooring edge of the skirting board with silicone to prevent water ingress.
4. When transition profiles are required install the PE foam rod and silicon in the expansion gap ensuring room is left for the base of the transition profile.
5. Install the expansion profile covering the expansion gap and PE foam rods. Silicon the edges of the profile to prevent water ingress
6. For a great finish around pipes, use pipe covers. Install the PE foam rod and apply silicon in the expansion space before placing the pipe cover on the floor, silicon the edges of the pipe cover to ensure no water ingress.
7. In areas wet areas where kickboards, wall boards, door jambs etc are present apply silicon to the floor edge of the panels to ensure no water ingress underneath.
8. In areas where edges of laminate are exposed e.g., in dishwasher cavities. Prevent water ingress by covering the ends of the laminate using a C channel with a foam rod inside, silicon the edge of the profile to stop water ingress.



Woodland
Lifestyle

Wet Area Installation Document

Vinyl Plank

1. If required, the substrated should be protected with Mapelastic Aquadefense Waterproof Membrane System.
2. Install Woodland Lifestyle Vinyl Planks using Mapei Adesilex G19
3. Seal all perimeter edges and penetrations within 1.5m of a sanitary fixtures with a flexible MS Silicone.

Mapelastic Aquadefense waterproof membrane system is only required in a defined wet area. This includes bathrooms or shower rooms. This may also be required in multi-level residential homes.